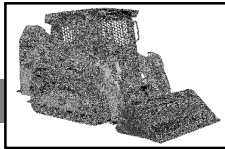




DEALER REFERENCE LIST



IMPORTANT: See the machine and/or engine parts manual for related parts. Parts listed apply to NXT and NXT2 units unless noted.

Abbreviations:
 RT - Radial Track
 CTL - Compact Track Loader

Fuel Shut-off Solenoids - Track Loader
Quick Reference List

Model	Engine Make	Engine Model	Serial Number	Solenoid Part Number	Notes
RT Series					
RT175	Yanmar	4TNV98-ZNMS 4TNV98C-NMSL		*	
RT210	Yanmar	4TNV98T-ZXNMS 4TNV98CT-NMSL		*	
RT250	Deutz	TD 3.6 L4		**	

CTL Series					
CTL 55	Yanmar	4TNV84T-ZKTBL		*	
CTL 60	Yanmar	4TNV98-YTBL	21301933 and Up	189575	
CTL 60	Yanmar	4TNE98	21301932 and Before	186643	
CTL 65	Yanmar	4TNV98-ZNTBL		*	
CTL 70	Isuzu	4JG1-TPA		185208	
CTL 75	Yanmar	4TNV98T-ZNTBL		*	
CTL 80	Yanmar	4TNV106T-XTBL	21500629 and Up	189575	
CTL 80	Yanmar	4TNE106T-TBL	21500628 and Before	204919	
CTL 85	Kubota	V3800DI-T		K1C01060015	

* **NOTE:** These engines are electronically controlled, and the fuel shut-off is controlled by the ECU (actuator). The fuel shut-off solenoid is not replaceable. Instead the fuel injection pump and ECU must be replaced.

** **NOTE:** There is no fuel shut-off for the fuel injection pump. The "fuel injection" pump is a "high-pressure" pump and the individual injectors have an electronic shut-off built into them that is controlled by the ECU; when the operator turns off the ignition switch, the ECU shuts off the fuel to the injectors, stopping the engine. Replace parts accordingly.