

1 1/2" & 2" Polypropylene Self-Priming Centrifugal Pumps

6.5 PRO HP MOTOR FEATURES

- Cast Iron Cylinder Sleeve.
- Heavy Duty Flywheel.
- Overhead Valve.
- High Oil Fill.
- Oil Guard® Low Oil Sensor.
- Breather Through Air Cleaner.



200P6PRO
190 GPM

PUMP FEATURES

- Precision molded construction.
- Corrosion resistant.
- Low maintenance.
- Lightweight.
- Superior design.
- EPDM Standard, FKM (viton type) available.

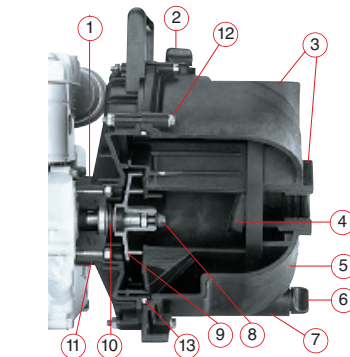
Maximum Engine Protection!

- We have designed the new Banjo poly pump to protect the engine seal in the event of pump seal failure. We have separated the pump from the engine by 1/2" and installed a special slinger/engine seal that completely protects the engine from any corrosive fluids. This new slinger design is the best in the poly pump industry at protecting your engine.
- For additional seal protection, small vanes are molded into the back side of the impeller. During operation, these vanes (on back side of the impeller) pump out a major portion of the liquid from the seal area which reduces pressure. The internal operating pressure of the pump is approximately 50 P.S.I. with the seal area operating at only 5 P.S.I. This leaves enough liquid in the seal area to lubricate and cool.
- Priming is now made easier by the incorporation of two new prime and drain plugs. These plugs are now made to act as thumb screws with o-ring seals for quick priming and draining before and after use. Priming is from the bottom of the pump chamber. A very small amount of liquid in the bottom of the pump is sufficient for priming since the liquid enters the volute from the bottom side. The pump will prime with the check valve open.
- The impeller has been designed for easy removal during maintenance. A 7/16" — 14 hex nut is installed into the impeller during assembly at our plant. This nut is used to lift the impeller from the engine shaft by screwing a 7/16" — 14 bolt into nut at the end of the impeller.

CAUTION-WARNING: Please do not run pump dry, restrict or reduce port sizes, or dead head pump. This could cause component failure to pump.

DO NOT USE WITH FLAMMABLE LIQUIDS.

NOTE: Engine warranty service available at authorized Briggs & Stratton and Honda dealers.



1. Maximum engine protection - pump end is separated from engine
2. Large prime plug thumb screw
3. 1 1/2" & 2" ports
4. Check valve
5. "V" shaped body for quicker priming
6. Large drain plug thumb screw
7. High strength glass-filled polypropylene construction
8. Impeller bolt easily removable
9. High performance precision molded impellers
10. Mechanical shaft seal (available in 3 materials)
11. Large weep holes
12. All stainless steel hardware
13. Heavy duty body O-ring

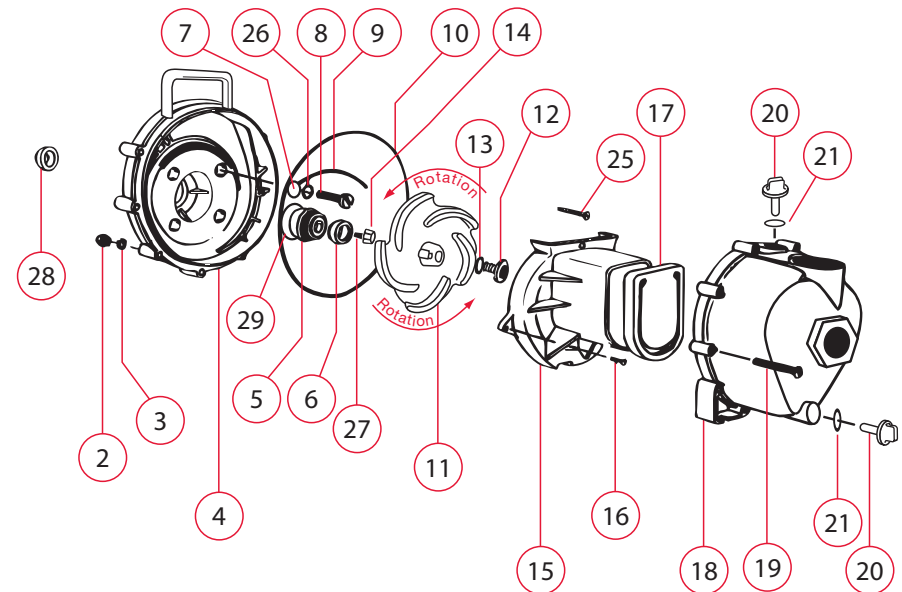
POLY PUMPS GAS ENGINE PUMPS WITH EPDM RUBBER PARTS (POLY)

PART NO.	DESCRIPTION	HP	PRICE EA.
150P-3	1 1/2" Pump x 3.5 HP Briggs	3.5	737.47
200P-3	2" Pump x 3.5 HP Briggs	3.5	737.47
200PH-5	2" Pump x 5.5 HP Honda Engine	5.5	1495.86
200PH-5E	Complete Pump and 5.5 HP Honda w/Electric Start	5	2136.9
200P6PRO	Gas Engine Complete Pump & 6.5 HP Briggs Stratton Pro Series Engine	6.5	1062.64

Sales & Tech: sales1@banjocorp.com

PUMPS

www.banjocorp.com



REPLACEMENT PARTS FOR PUMPS MANUFACTURED BEGINNING SEPT. 1996

ITEM	DESCRIPTION	PER PUMP	PART 1 1/2"	REF. 2"	PRICE	ITEM	DESCRIPTION	PER PUMP	PART 1 1/2"	REF. 2"	PRICE
2	Body Nuts SS	10	V07019	V07019	.34	18	Poly Pump Body Assembly	1	12711A	12712A	114.62
3	Lock Washer SS	10	V07018	V07018	.34	19	Body Screws SS	10	12720	12720	2.68
4	Poly Pump Rear Bracket	1	12703A	12703A	71.03	20	Prime / Drain Plug	2	12777	12777	1.78
5 & 6	Seal Assembly**	1	12713	12713	35.53	21	Prime / Drain Plug O-Ring*	2	UV15163	UV15163	.36
7	Screw Heads "O" Ring**	4	12717	12717	.53	25	Upper Volute Screw SS	1	12900	12900	1.19
8	Bracket Screws SS	4	12715A	12715A	2.98	26	Rear Bracket Washer SS	1	12901	12901	.36
9	O-Ring Segment**	1	12754	12754	4.17	27	Impeller Key	1	12902A	12902A	1.25
10	Body O-Ring**	1	12719A	12719A	10.75	28	Poly Pump Slinger**	1	12716	12716	4.17
11	3 Vane Poly Pump Impeller+ 3.5 h.p.	1	12771A		34.03	29	O-Ring for Seal Assembly**	1	12710	12710	2.63
	5 Vane Poly Pump Impeller+ 5.5 h.p.			12772	34.03	N/S	Complete Bearing Pedestal	1	12882A	12882A	173.11
12	Impeller Bolt SS	1	12765A	12765A	13.44	N/S	Impeller Removal Bolt	1	12099	12099	2.38
13	Impeller Bolt Gasket**	1	12774VA	12774VA	1.13		Pump Repair Kit — 3 Vane Impeller (Consists Of Items Marked With +)	1	12003A	12003A	101.47
14	Impeller Hex Nut	1	12775A	12775A	10.75		Pump Repair Kit — 5 Vane Impeller (Consists Of Items Marked With +)	1	12000A	12000A	101.47
15	Poly Pump Volute	1	12702A	12702A	52.29		Pump Seal/O-Ring Kit (Consists Of Items Marked With *)	1	12999A	12999A	57.30
16	Volute Screws SS	2	12725	12725	2.68						
17	Poly Pump Check Valve+	1	12705	12705	12.29						

See page 106 for complete pumps equipped with FKM (viton type) elastomers.
See page 158 for FKM (viton type) o-ring options.

